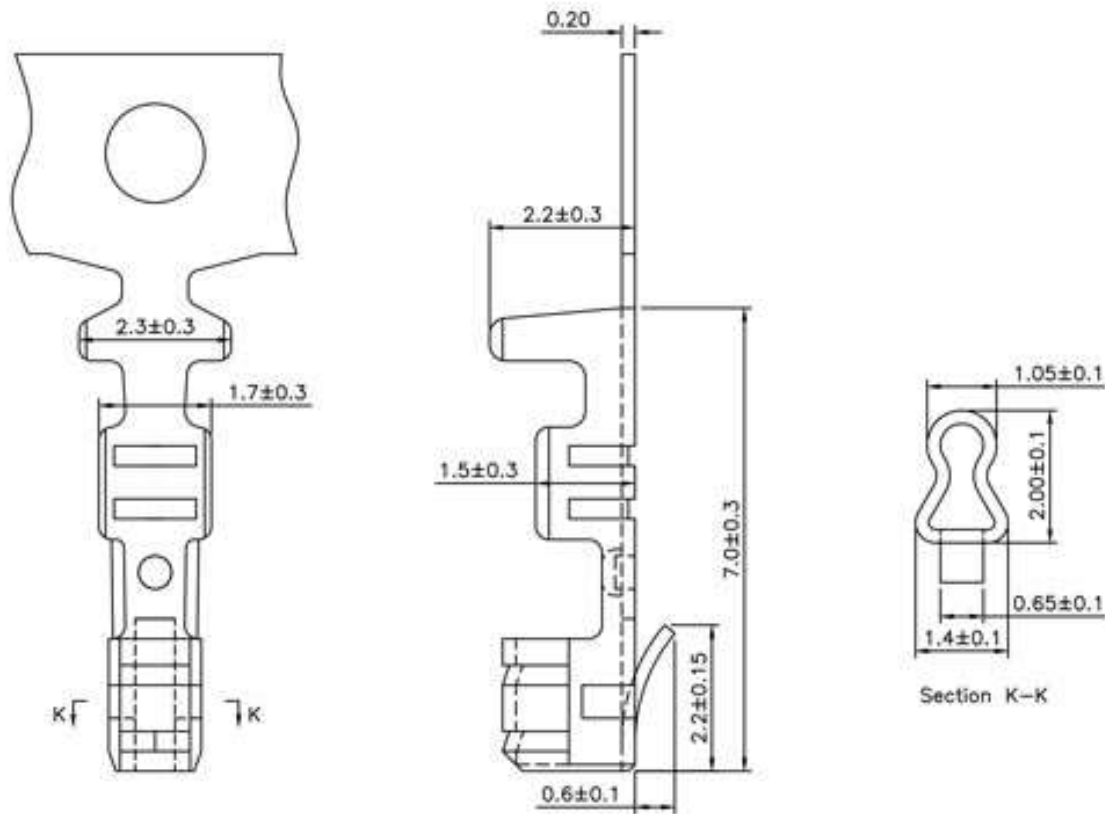


**SPECIFICATION**  
 Current Rating:3A AC/DC  
 Voltage Rating:250V AC/DC  
 Applicable Wire Range:AWG #22~28  
 Accepts With  $\phi 0.7\text{mm}$  Round Pin  
 Material:Phosphor Bronze,Tin Plated  
 Q'ty:10K PCS/Reel  
 RoHS Compliant



Section K-K

DRAWING No.		APPROVED BY		UNLESS OTHERWISE SPECIFIED TOLERANCES ARE 1~10 $\pm 0.2$ 10~20 $\pm 0.3$ 20~40 $\pm 0.4$ 40~ $\pm 0.5$							
01698		EMILY									
		CHECKED BY									
		HZF									
DRAWING BY		WZL									
SCALE	NONE	REV.	A0	UNIT mm			A0	NEW RELEASE	HZF	09/04/2010	
								NO.REV.	REVISIONS	CHK	DATE