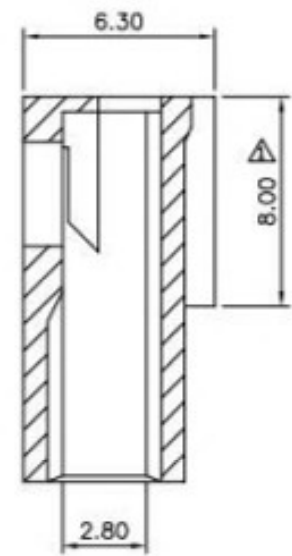
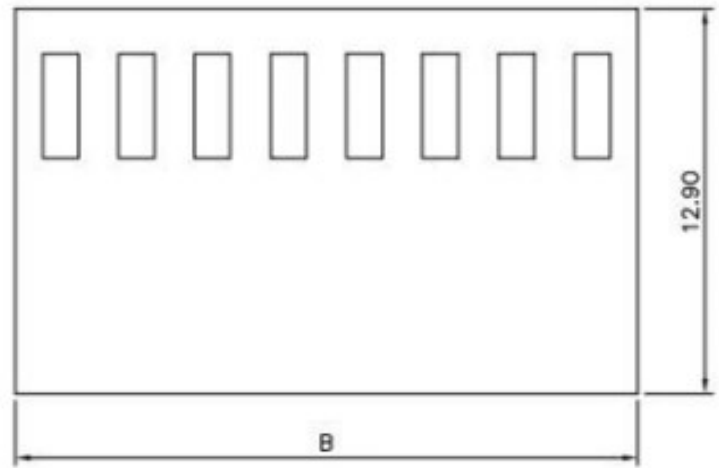
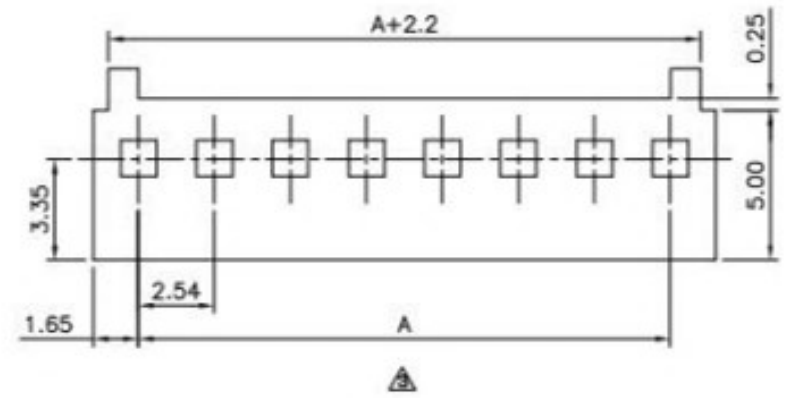


**SPECIFICATION**  
 Current Rating: 3A AC,DC  
 Voltage Rating: 250V AC Max.  
 Operating Temperature: -25°C~+85°C  
 Insulation Resistance: 1000 Megaohms Min.  
 Contact Resistance: 20 Milliohms Max.  
 ⚠ Material: PA66(UL94V-2)  
 RoHS Compliant



Pin	A	B
02	2.54	5.64
03	5.08	8.16
04	7.62	10.72
05	10.16	13.30
06	12.70	15.78
07	15.24	18.40
08	17.78	20.80
09	20.32	23.50
10	22.86	26.00
11	25.40	28.50
12	27.94	31.00
13	30.48	33.50
14	33.02	36.00
15	35.56	38.50
16	38.10	41.20
17	40.64	43.60
18	43.18	46.32
19	45.72	48.80
20	48.26	51.34

DRAWING No.		APPROVED BY		UNLESS OTHERWISE SPECIFIED TOLERANCES ARE .X ±0.35 .XX ±0.25 ANG.	NO. REV.	REVISIONS	CHK	DATE
01931		EMILY						
		CHECKED BY HZF						
		DRAWING BY SONG						
SCALE	NONE	REV.	B3	UNIT mm				

⚠ B3	Add Dim.	HZF	09/09/2011
⚠ B2	Modify SPEC.	HZF	12/26/2008
⚠ B1	ADD DIM 8.00	HZF	07/21/2008
⚠ B0	NEW RELEASE	BECKY	07/19/2005